

# TourMe: Tourist Application for Mobile Platforms

---

Alexander Troshkov, Kirill Kulakov

Presenter: Kirill Kulakov

---

This project is supported by grant KA322 of Karelia ENPI programme, which is co-funded by the European Union, the Russian Federation and the Republic of Finland



14th FRUCT Conference  
November 11-15, 2013  
Helsinki, Finland



# Background

	Planning and organization	Trip execution	Trip feedback
Large (joint) group	<ul style="list-style-type: none"> <li>- Travel agency</li> <li>- Common plan</li> <li>- Common transport</li> <li>- Common booking</li> </ul>	Fixed plan	Travel agency services
Small (family) group	<ul style="list-style-type: none"> <li>- may not agency</li> <li>- common/individual plan</li> <li>- common transport</li> <li>- common booking</li> </ul>	Flexible plan	Social networks
Individual trip	<ul style="list-style-type: none"> <li>- no agency</li> <li>- individual plan</li> <li>- public transport</li> <li>- individual booking</li> </ul>	No plan, just wishes	Social networks

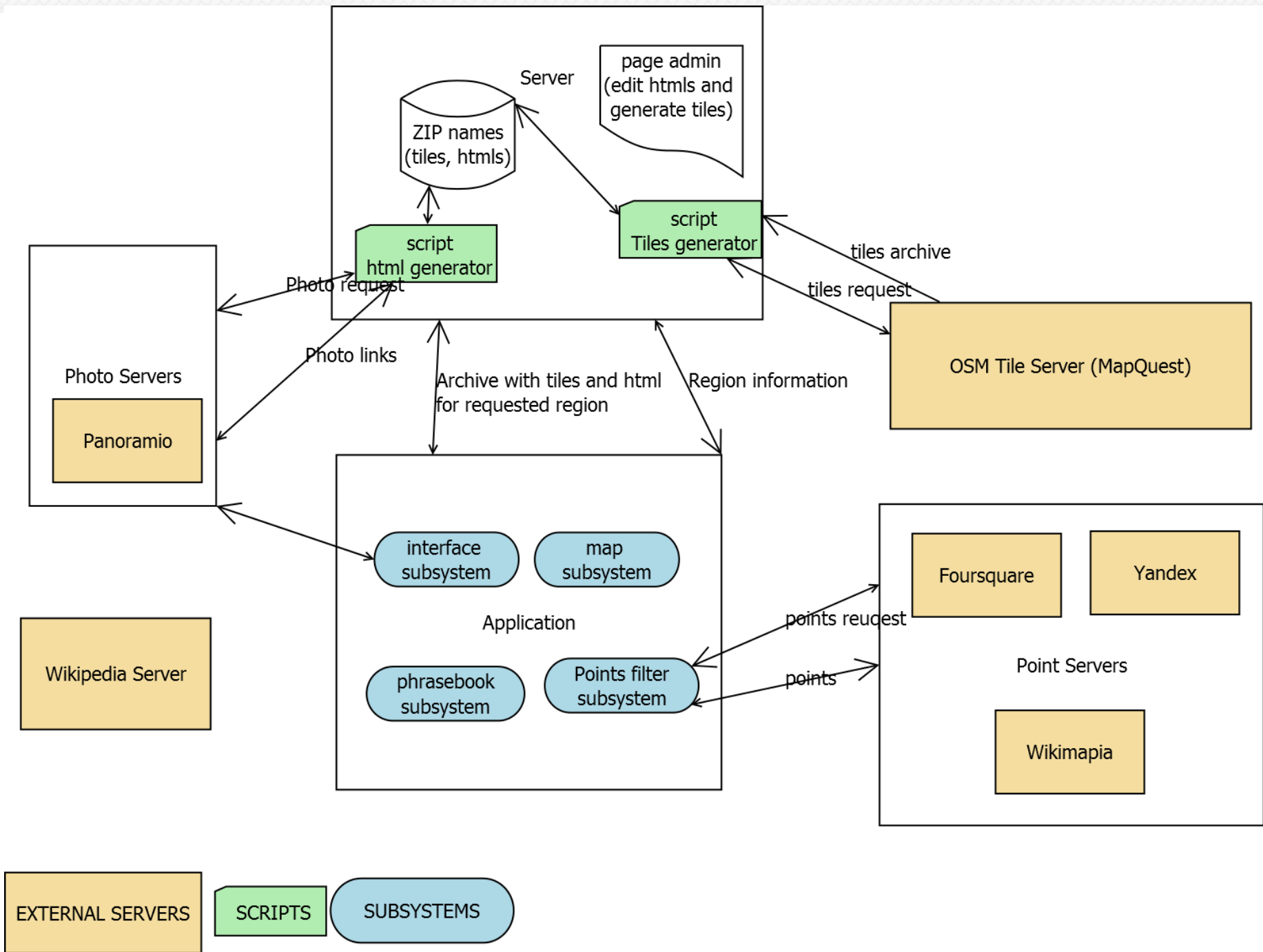
# Objectives

- Infrastructure improvement
- Accessibility of information from different sources
- Rules of conduct
- Nearest places
- Travel log
- Native and foreign languages

# Work modes

- Trip planning mode
  - Stable Internet access
  - Mark regions to go
  - Download or caching data
- Travel mode
  - Use offline data
  - Use additional online data (if network is available)
  - Use small helpers: phrasebook, etc.
  - Make notes in Travel Log

# Architecture



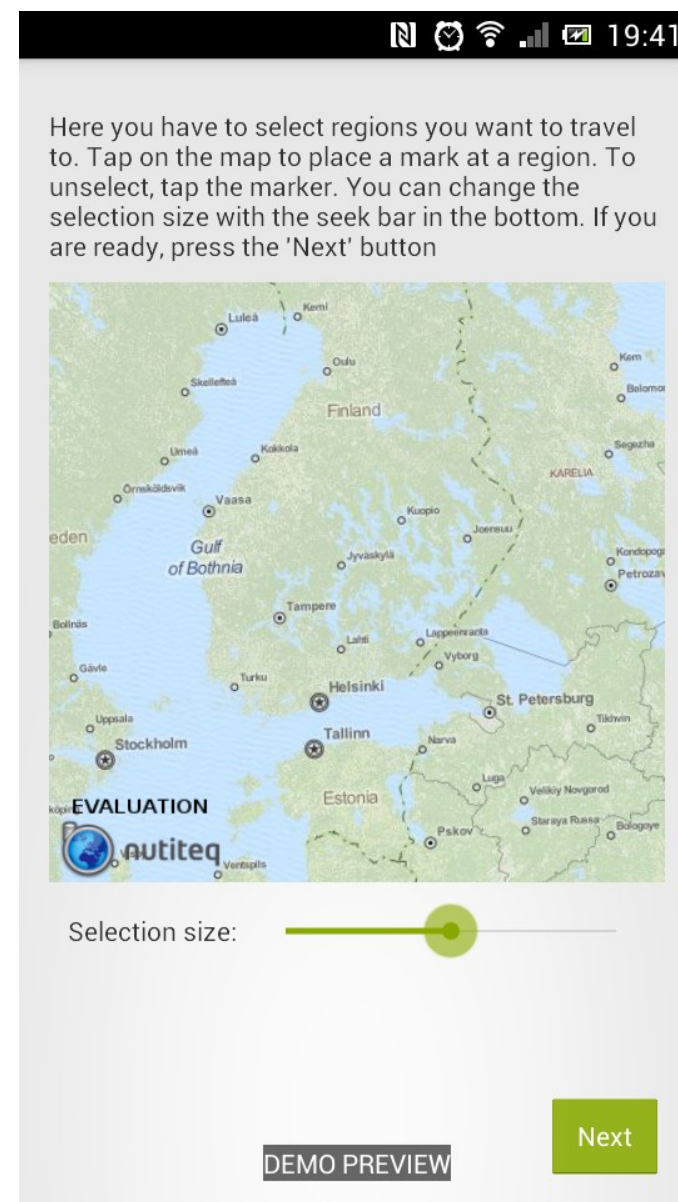
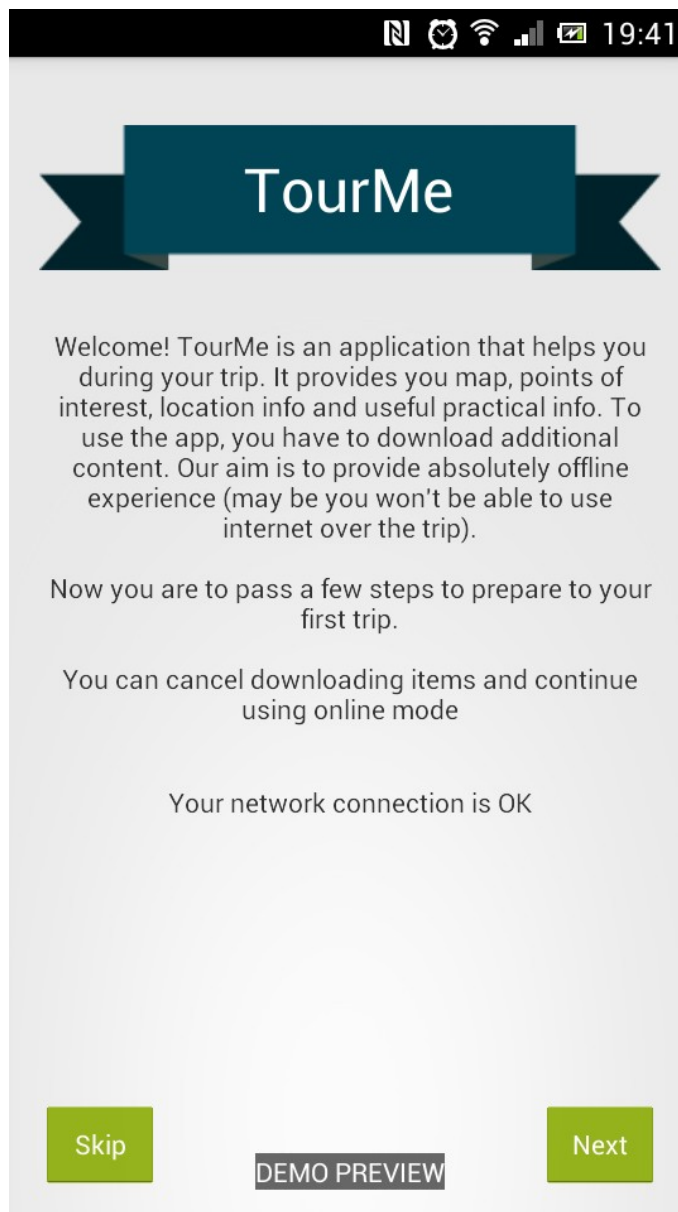
# Architecture

	Offline access	Multilanguage support	Performance
Google Maps	+ With restrictions	+	GOOD
OpenLayers (HTML)	+	+ (in a less degree)	BAD
Nutiteq Map	+	+	OK

# Travel Log

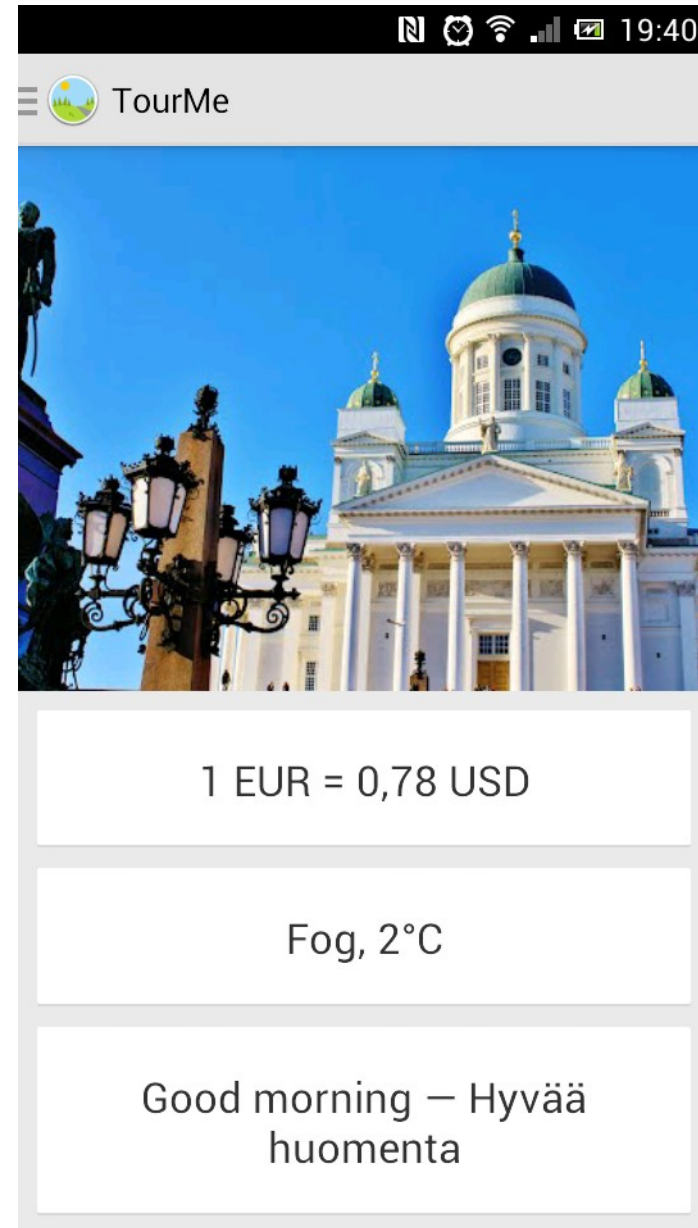
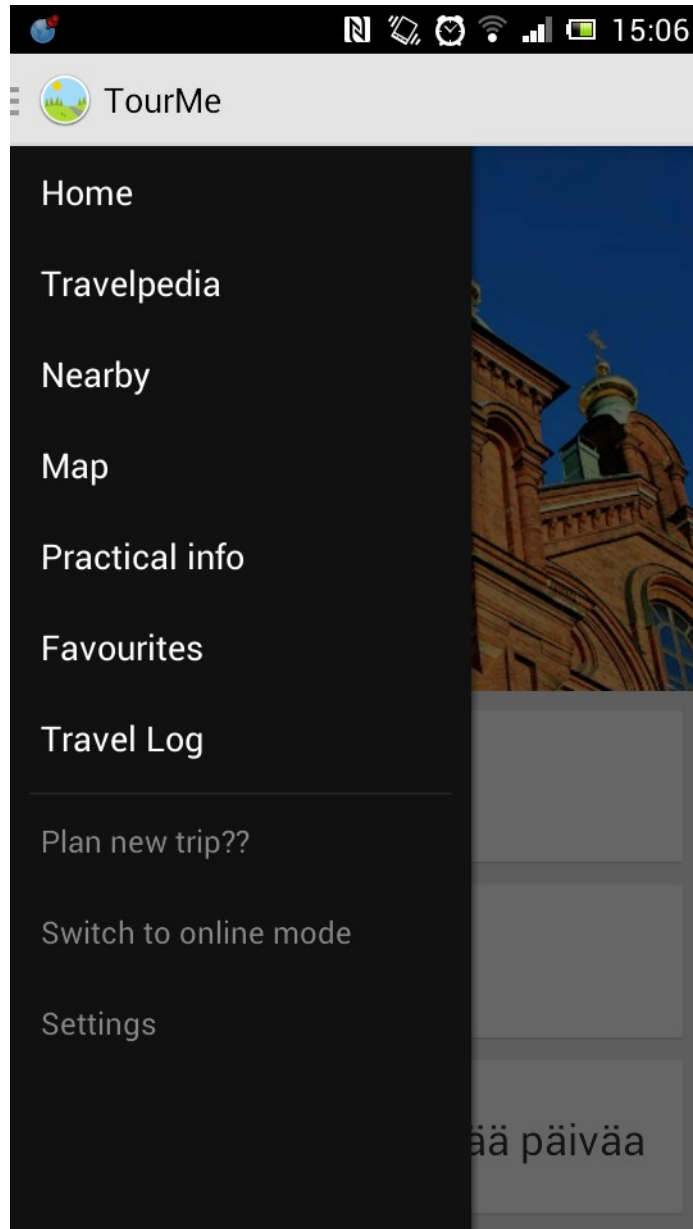
- Possibility to mark visited places:
  - Time
  - Text
  - Photo
  - Location
  - Impressions
  - Sharing with other device apps (social networks, messages etc)

# Trip planing mode

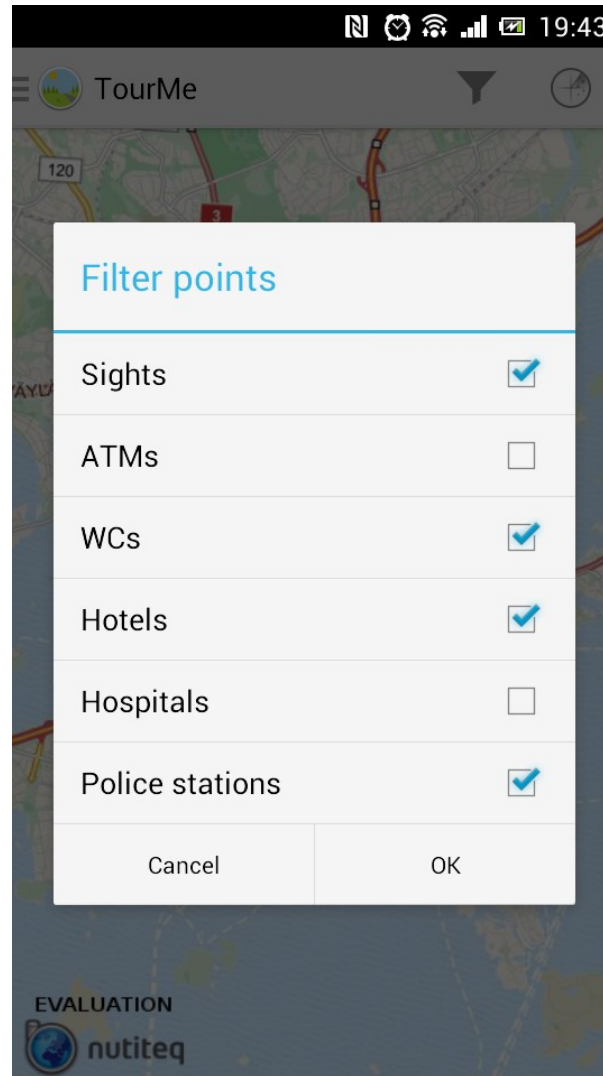
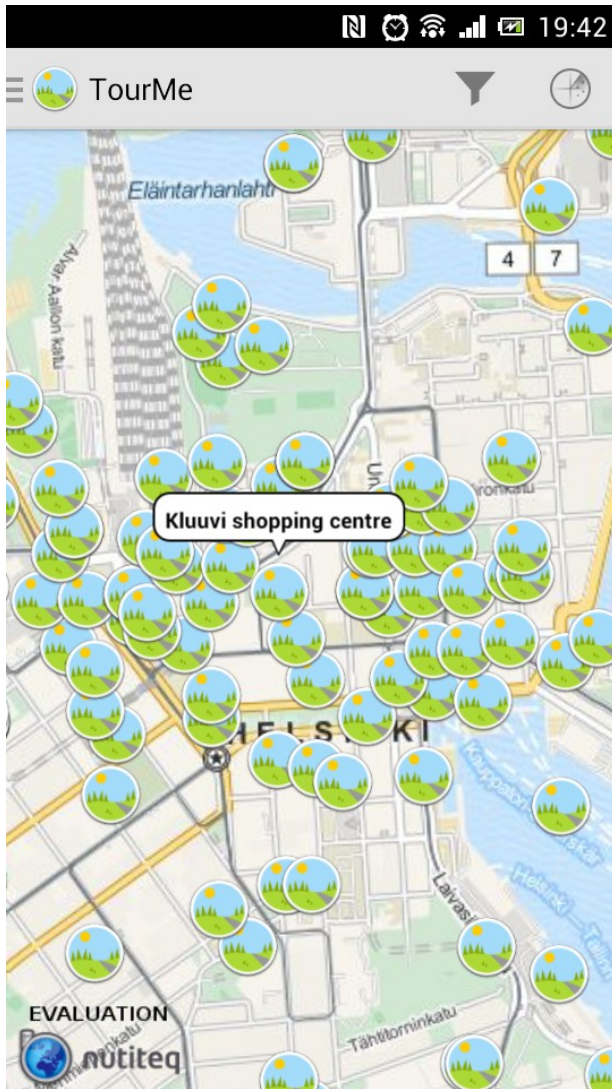




# Main menu



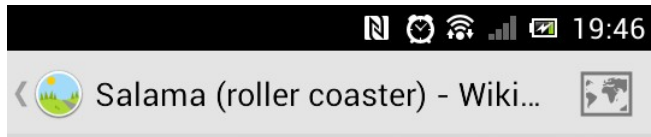
# Map



Kallio	230m
Hakaniemi metro station	381m
Helsinki Workers' House	456m
Paasitorni	456m
Hakaniemi	457m
Panoraama	612m
Alppiharju	630m
Kulttuuritalo	638m
Salama (roller coaster)	639m
Torkkelinmäki	652m
Linnunrata	664m
Pikajuna	702m
Helsinki Ferris Wheel	704m



# Travelpedia



## Salama (roller coaster)

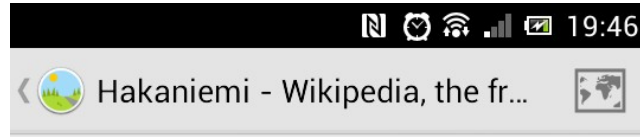


### Salama



### Linnanmäki

Coordinates	60°11'14"N 24°56'21"E
Status	Operating
Opening date	April 25, 2008
General statistics	
Type	Steel – Spinning
Manufacturer	Maurer Söhne
Height	55.9 ft (17.0 m)
Length	1,377.11 ft (419.74 m)
Speed	37.3 mph (60.0 km/h)
Capacity	900 riders per hour

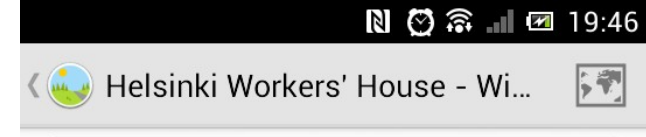


## Hakaniemi



The Hakaniemi market square

**Hakaniemi** (*Swedish* *Hagnäs*) is an unofficial district of **Helsinki**, the **Finnish** capital. It is considered a part of the Helsinki city center. Historically, it was often associated with the working class and worker's associations. However, the cost of living has risen considerably in recent years and is now on par with the rest of the downtown area of Helsinki. The best-known features of Hakaniemi include a large and lively marketplace, Oriental food stores



Paasitorni in Hakaniemi, Helsinki, Finland



# **Thanks for your attention!**

---

kulakov@cs.karelia.ru  
atroshko@cs.karelia.ru

<http://github.com/nonbdev/tourme>